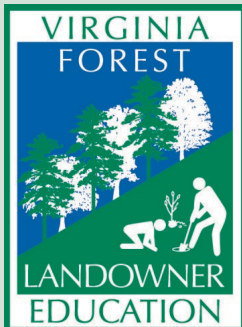




# Using Google Earth Pro

Jennifer Gagnon

Virginia Forest Landowner Education Program



# GOOGLE EARTH PRO

- GE Pro is a free software package which makes viewing aerial photos of your property a snap
- Allows you to calculate distance and area
- Historical photos are available for most locations
- USGS 7.5 Topographic maps are available on GE Pro



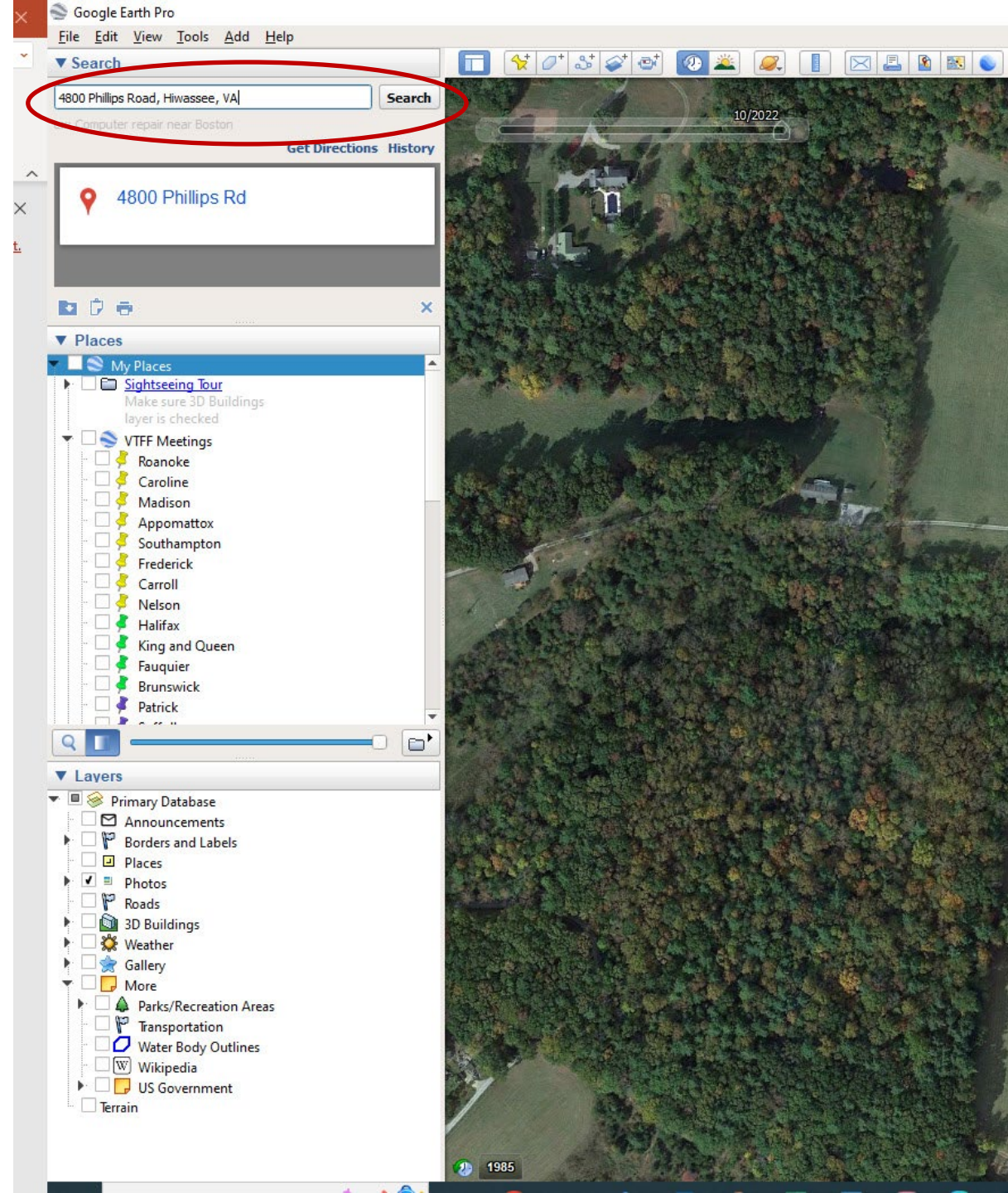
# GOOGLE EARTH PRO

- Download the free software:  
<http://earth.google.com>
- Select Google Earth Pro
- Agree to terms and click download
- Run/run setup
- Google should create a shortcut on your desktop



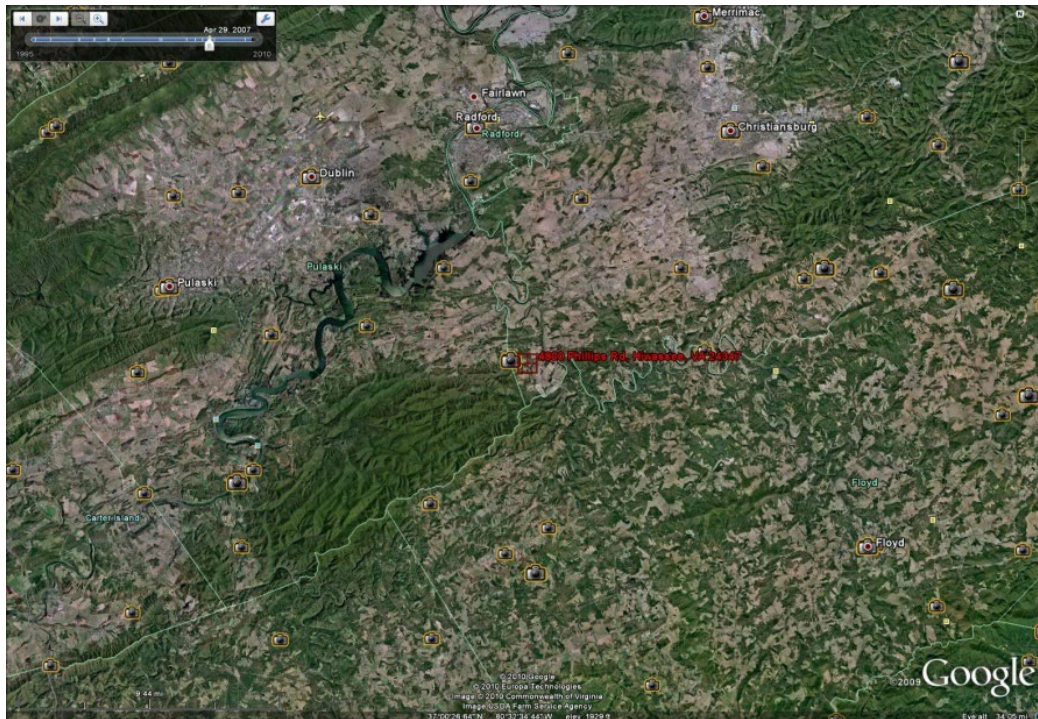
# GOOGLE EARTH PRO

- The program should open automatically; if not, double click the short cut icon on your desktop
- On the left side of your screen, you will see a search tool. Type the physical address of your property into the search field and click Search
- Hold on tight... and you're off!
- If your property doesn't have a physical address, use the name of a nearby road to get close



You should now be looking at an aerial photo of your property

- If your mouse has a scroll wheel, you can use that to zoom in and out
- If your mouse does not have a scroll wheel:
  - Zoom in by double clicking left
  - Zoom out by double clicking right
  - Or use the navigation tool bars on the top right side of the photo

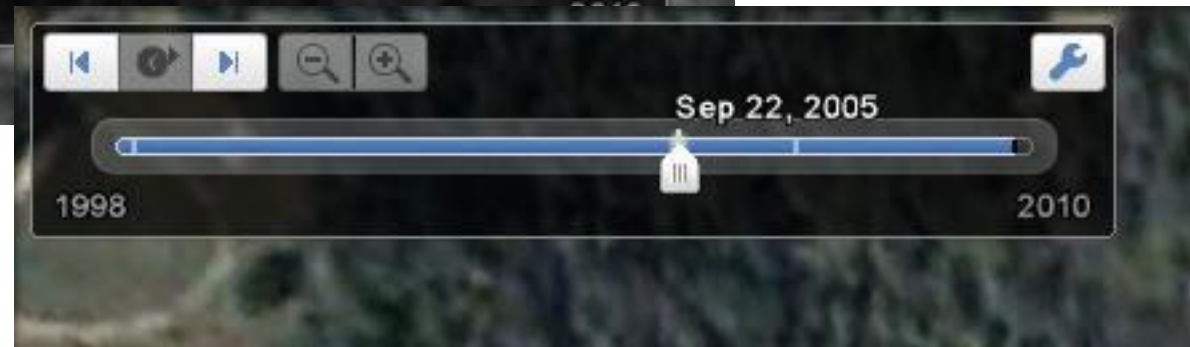


Zoom out for a small-scale map



Zoom in for a large-scale map

- To see historical aerial photos of your property, click the clock icon at the top of the screen
- A slider bar will appear at the top of the photo which will allow you to move through all the years of photography which are available
- The photo years will vary by location
- The photo types will vary by year (black and white versus color infrared)





1999 – Black & White



2005 – Color Infrared



2023 – Color Infrared

# GOOGLE EARTH PRO

Historical photo slider bar

Property address

Navigation tools

Scale bar

Elevation at which you are viewing the photo (changes as you zoom in/out)



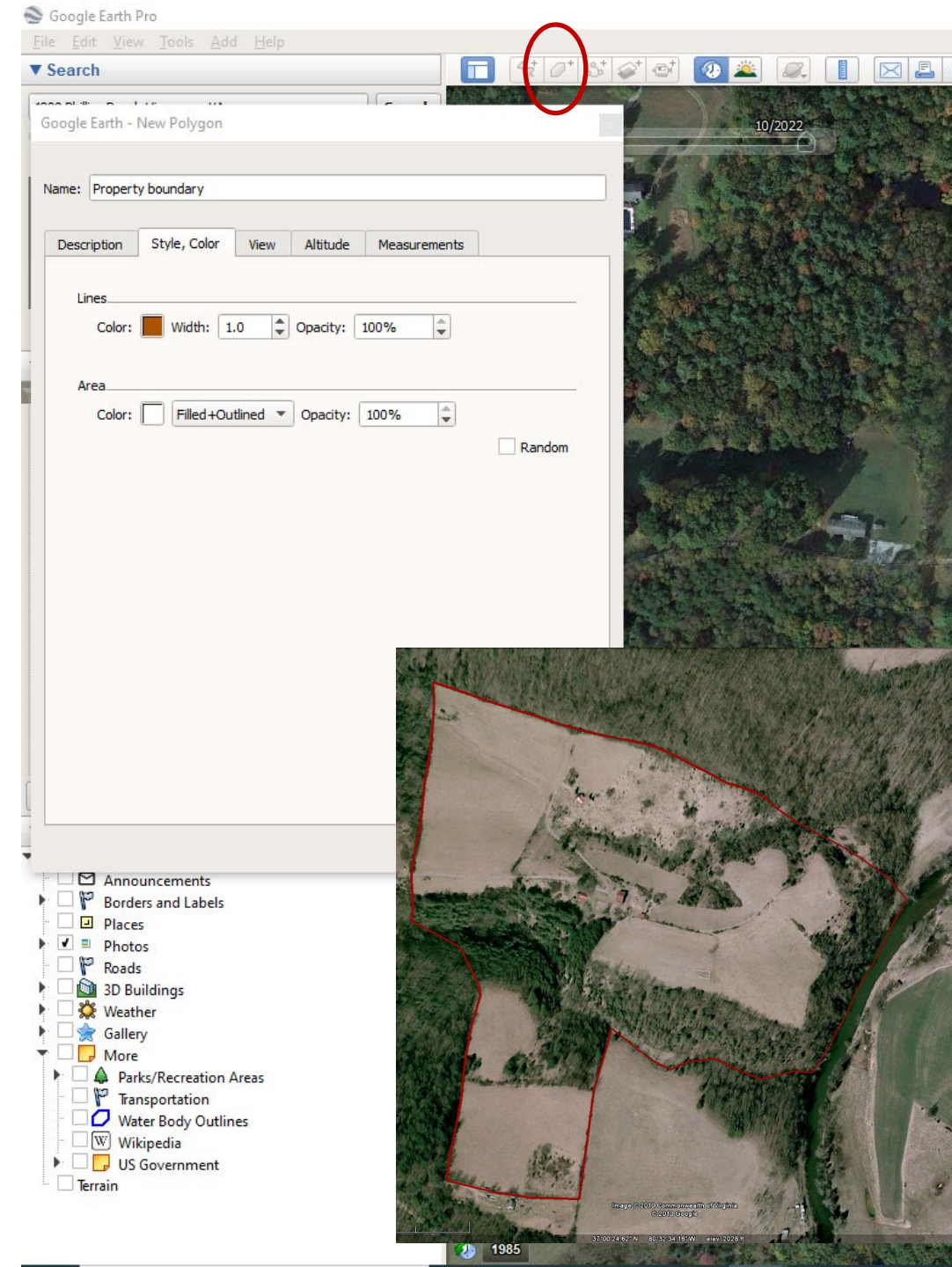
Latitude and longitude

Elevation of a feature on photo



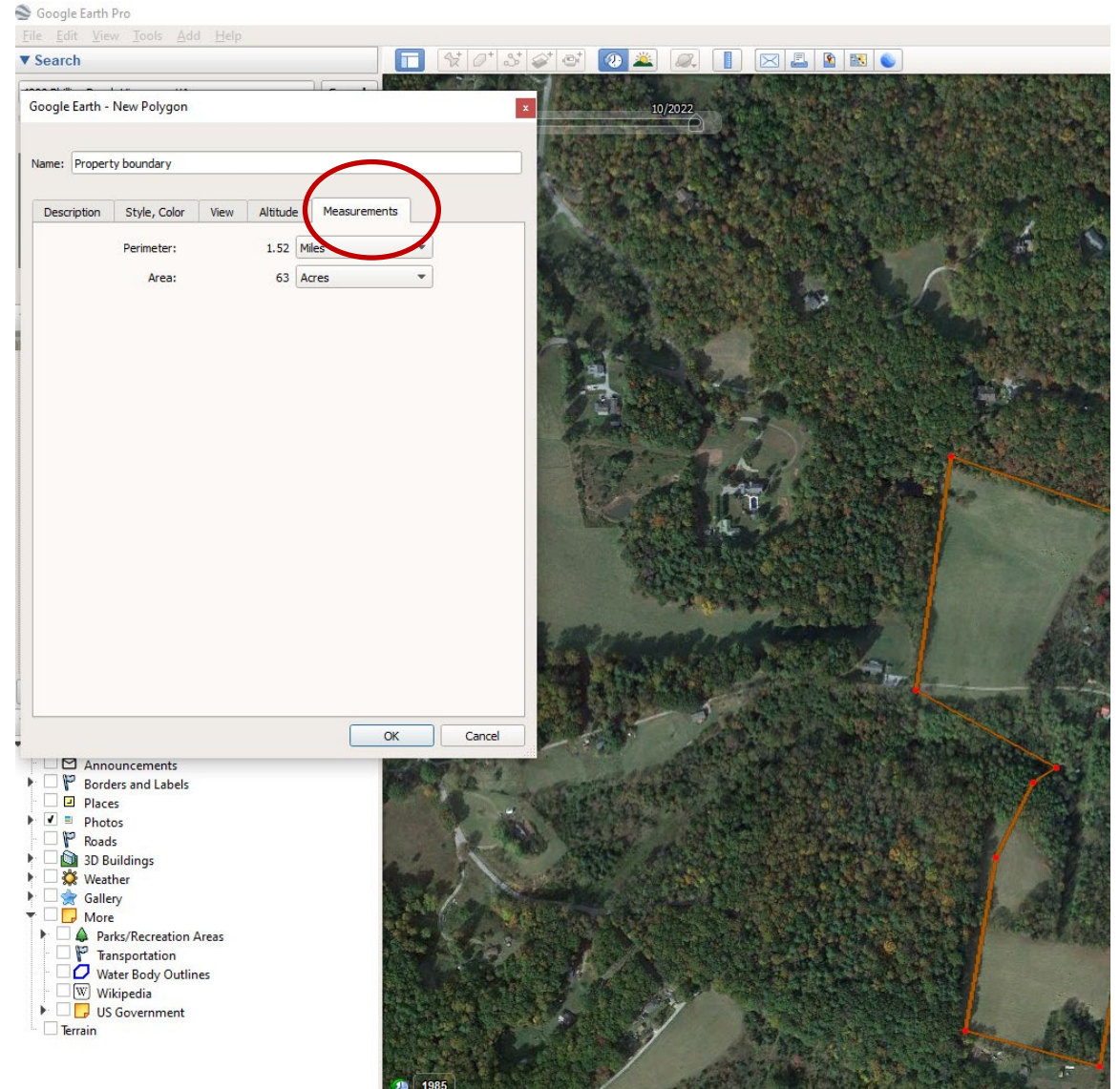
# GOOGLE EARTH PRO

- In the Advanced Exercise for Module 4 you will be asked to delineate your property boundaries on a map
- You can print your GE Pro map (file-save-save image) and draw your boundaries
- Or, you can use the add polygon tool in GE Pro to draw your boundaries electronically
  - From the toolbar, click add, then polygon
  - In the menu box that opens you can customize the look of your polygon
  - While the menu box is open, use the cursor to draw your boundaries



# GOOGLE EARTH PRO

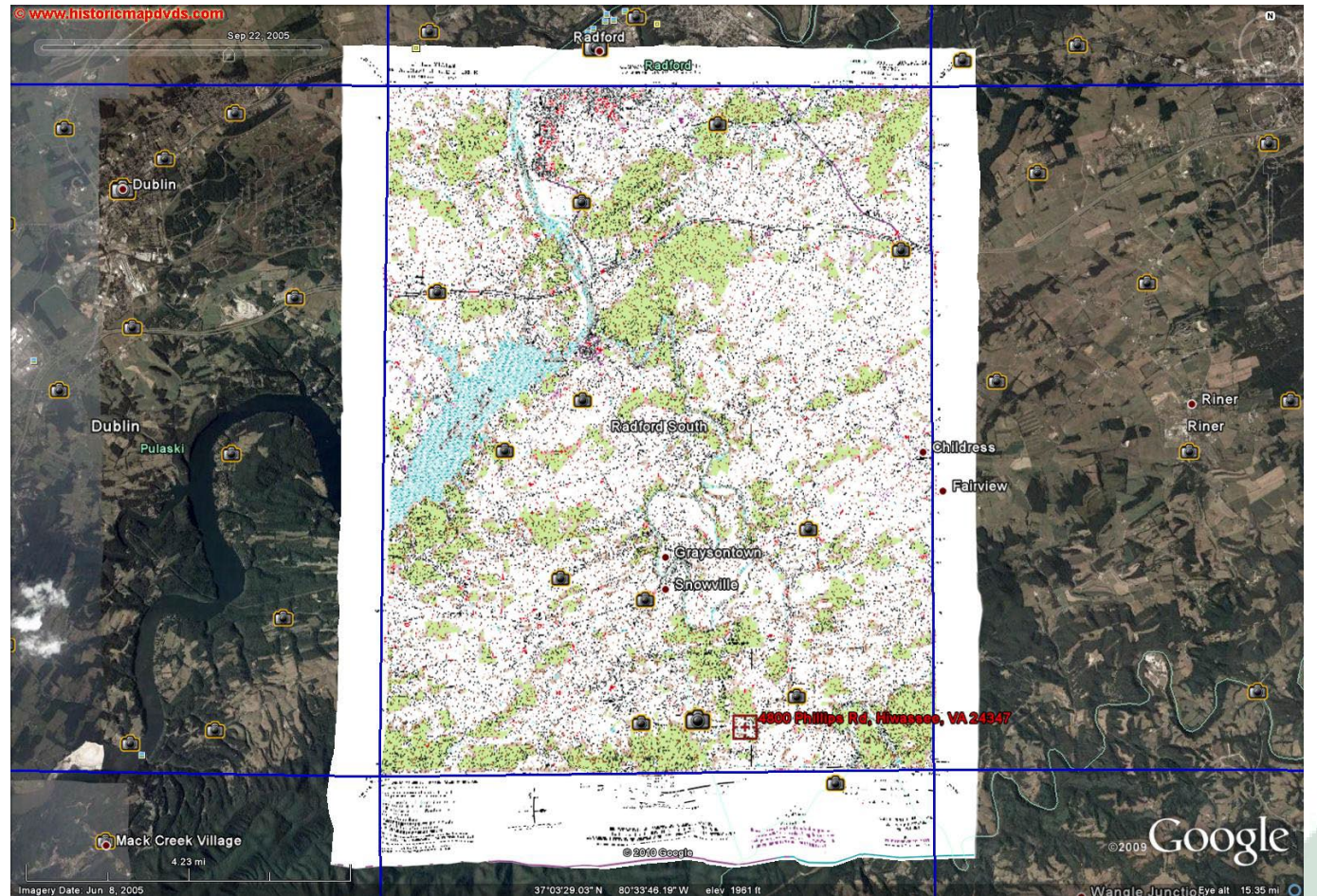
- One exciting feature of GE Pro is that you can calculate the area of your polygon
- In the add polygon tool, click the “Measurements” tab; select your measurement units of choice
- GE Pro will give you both perimeter distance and area.



- A few words about scale...
  - One feature GE Pro does not have is the ability to specify a particular scale
  - We will discuss scale in detail in Module 4; and scale will be important for completing the Module 4 Advanced Exercise
  - You will learn how to determine the scale of your aerial photos in Module 4



- Another exciting feature in GE Pro is the availability of a USGS 7.5 topographic map layer
- This feature must be added into the software

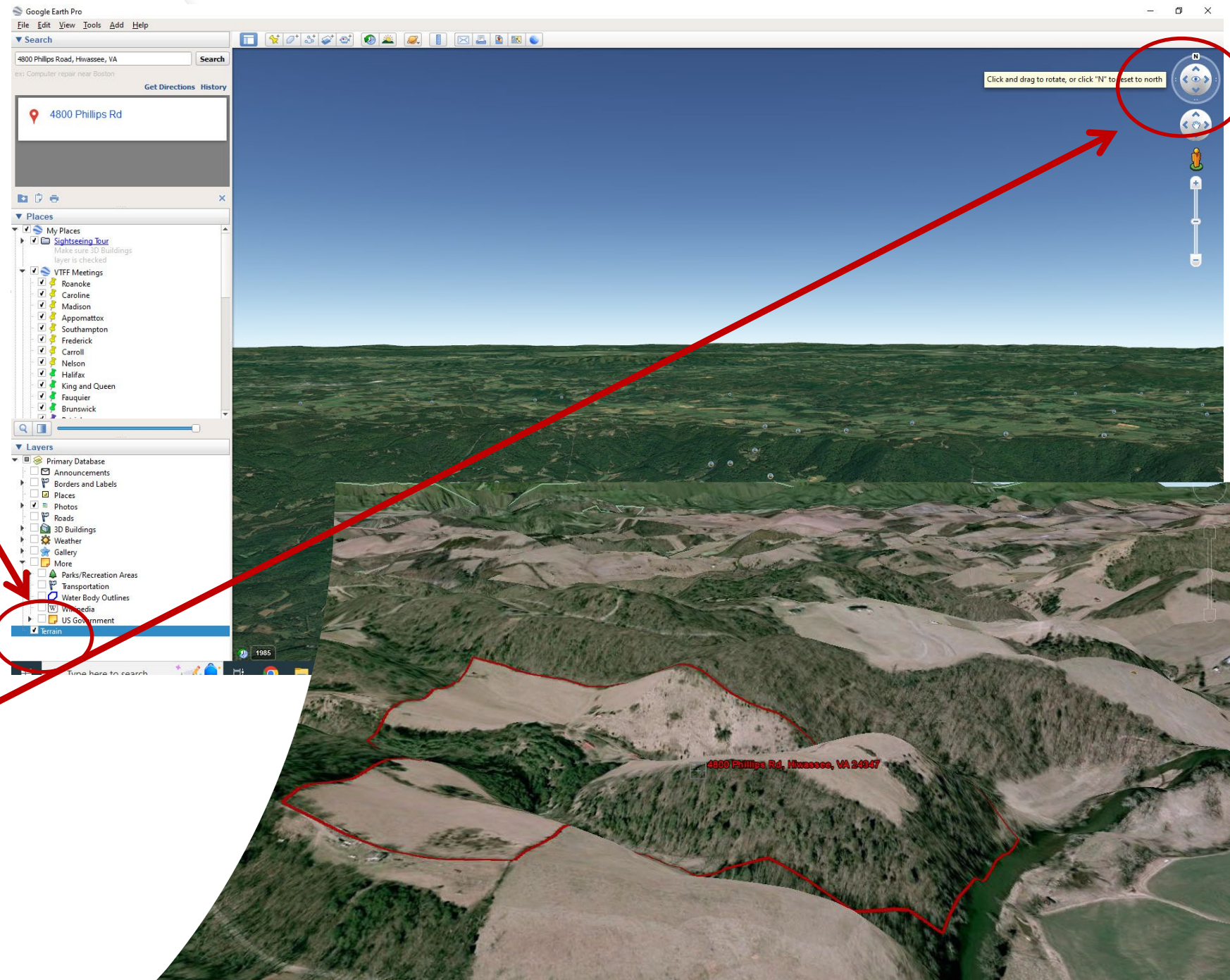


To add the topo map layer, go to:  
<http://www.earthpoint.us/TopoMap.aspx> and click “View on Google Earth”. Note, you can increase the transparency of the topo map in Google Earth following the instructions on the Earth Point page.

# GOOGLE EARTH PRO

## Terrain

- Check terrain in the layers menu
- Left click and hold on the up-arrow in the navigation tools



# GOOGLE EARTH PRO

You now have the basic skills necessary to navigate around GE Pro. There are MANY more things you can do in GE Pro, so explore and have fun!!

Become a Google mapping expert:  
<https://www.google.com/earth/outreach/learn/>

# SPONSORS



SUSTAINABLE  
FORESTRY  
INITIATIVE  
VIRGINIA

SFI-01146



VIRGINIA  
TREE FARM  
FOUNDATION



# FIND US ONLINE



<https://forestupdate.frec.vt.edu>  
[www.ext.vt.edu](http://www.ext.vt.edu)



VFELP



VirginiaForestLandownerEducationProgram



@VFLEP



**Virginia Cooperative Extension**

Virginia Tech. • Virginia State University

Virginia Cooperative Extension is a partnership of Virginia Tech, Virginia State University, the U.S. Department of Agriculture, and local governments. Its programs and employment are open to all, regardless of age, color, disability, gender, gender identity, gender expression, national origin, political affiliation, race, religion, sexual orientation, genetic information, military status, or any other basis protected by law.