

# RAIN GARDENS



**Presented By:**  
**Don Hearl**  
**Old Rag Chapter**  
**Virginia Master Naturalists**

# **RAIN GARDEN TOPICS**

- **DESCRIPTION**
  - **BENEFITS**
  - **COMPONENTS**
  - **LAYOUT AND DESIGN**
  - **CONSTRUCTION**
  - **PLANTS**
  - **MAINTENANCE**
  - **CASE STUDY – Stephanie DeNicola**
- 

# **RUNOFF – WHAT’S THE PROBLEM?**


- **Just 1 inch of rain falling on 1 acre of paved surface equals 27,000 gallons of polluted runoff.**
- **Thousands of miles of waterways in the Chesapeake Bay region have been legally designated as “impaired” (meaning polluted) by suburban and urban runoff under the federal Clean Water Act.**
- **Excess nitrogen and phosphorus, which fuels algal blooms that ultimately cause the Bay's dead zone, is still largely driven by precipitation, which washes contaminants into our waterways.**
- **With the watershed's ever-growing population pollution from urban and suburban runoff has become the only major source of nitrogen pollution in the Bay still growing.**
- **This reflects the need for increasing runoff management efforts.**

# WHERE DOES OUR RUNOFF GO?



Credit: CBF

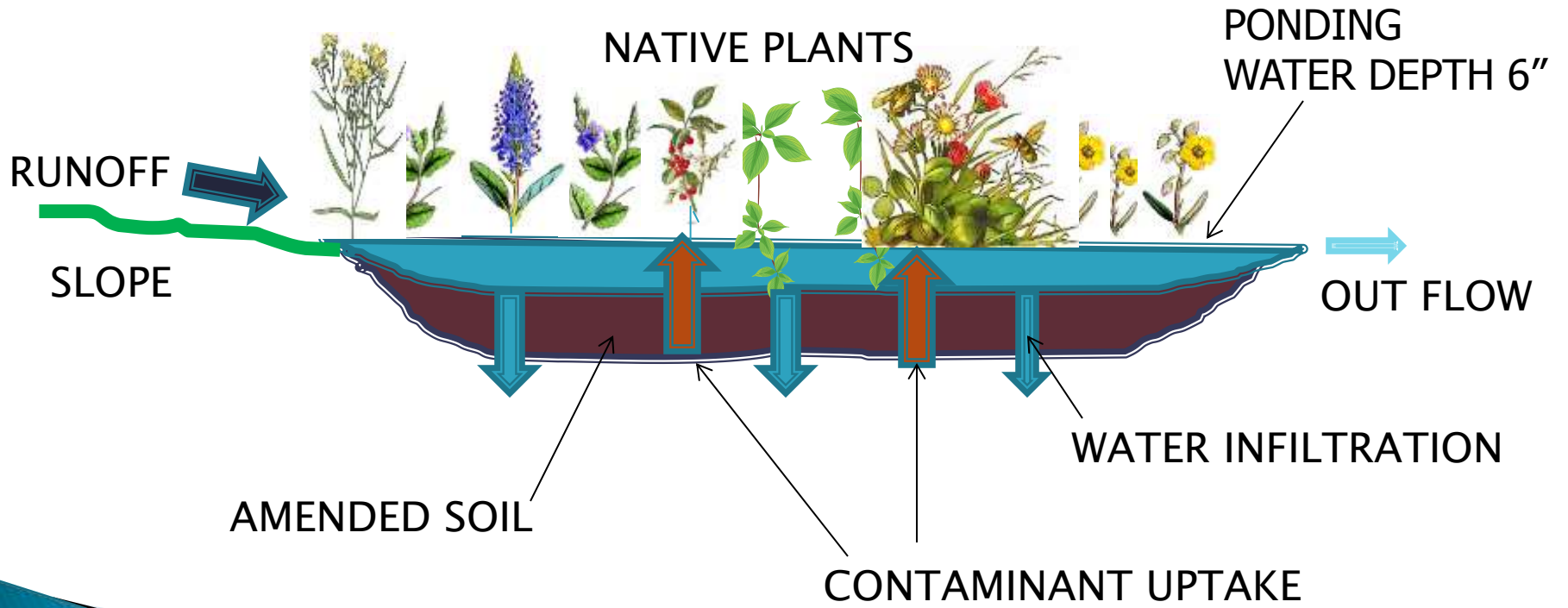
# WHAT IS A RAIN GARDEN?

- ▶ **A depression excavated in the ground on a natural slope where runoff occurs**
  - ▶ **A rain garden is planted with a variety of grasses, wildflowers, and woody plants.**
  - ▶ **Plants are adapted to the soil, precipitation, climate, and other specific site conditions.**
  - ▶ **Native plants with deeper root systems facilitate infiltration and also survive through periods of drought.**
  - ▶ **Rain gardens will mimic the hydrologic cycle and are designed to temporarily hold and soak in rain water runoff.**
- 

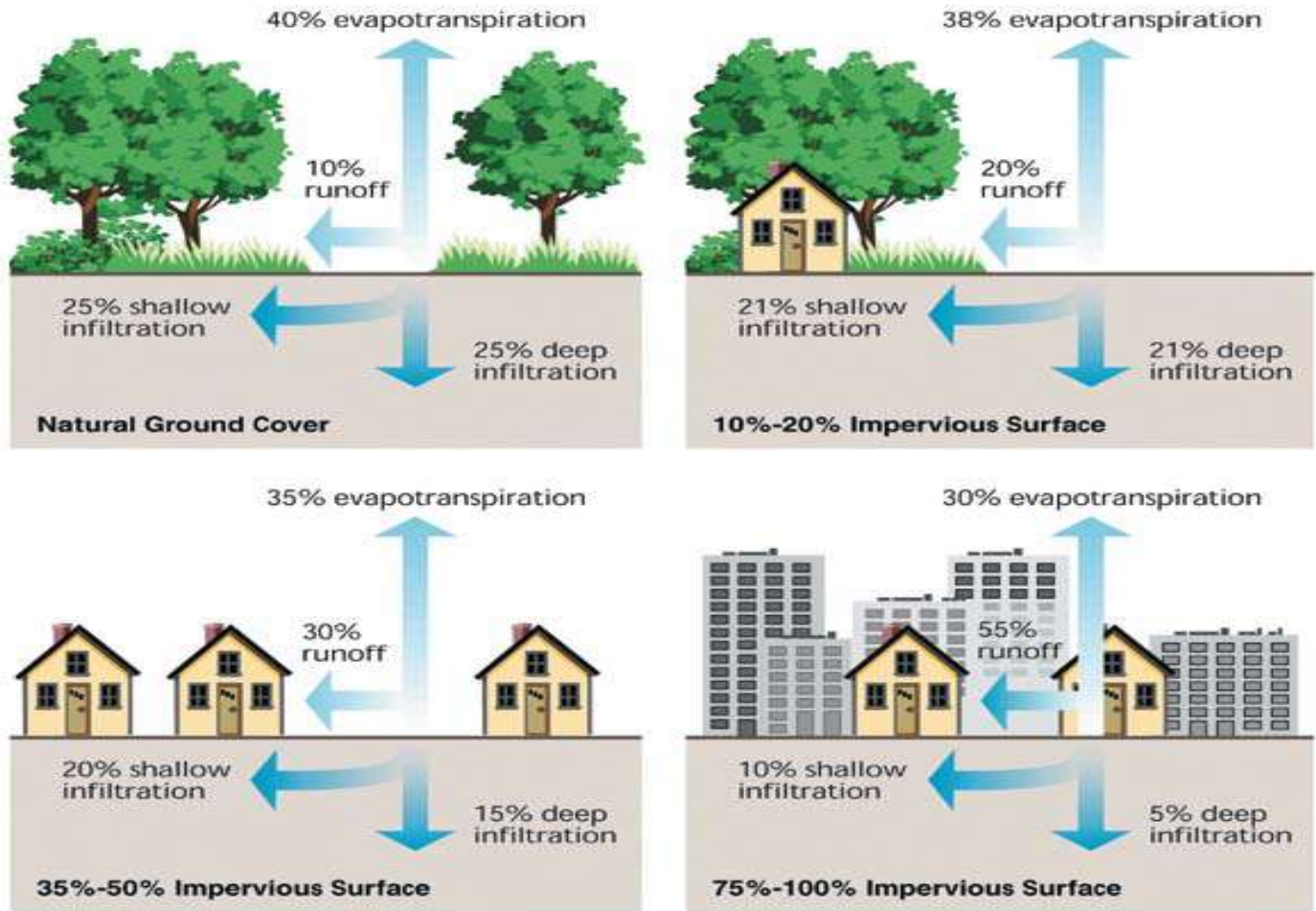
# WHY RAIN GARDENS?

- ▶ **REDUCE STORMWATER RUN OFF**
  - The US EPA estimates that pollutants carried by rainwater runoff account for **70%** of all water pollution.
- ▶ **REDUCE EROSION**
- ▶ **IMPROVES DOWN STREAM WATER QUALITY**
  - Rain gardens are effective in removing up to **90%** of nutrients and chemicals and up to **80%** of sediments from rainwater runoff
  - Rain gardens allow **30%** more water to soak into the ground.
- ▶ **INDIVIDUALS CAN MAKE A DIFFERENCE BY PLANTING RAIN GARDENS**
  - **Creates wildlife habitat**
  - **Aesthetically pleasing**

# RAIN GARDEN CROSS SECTION



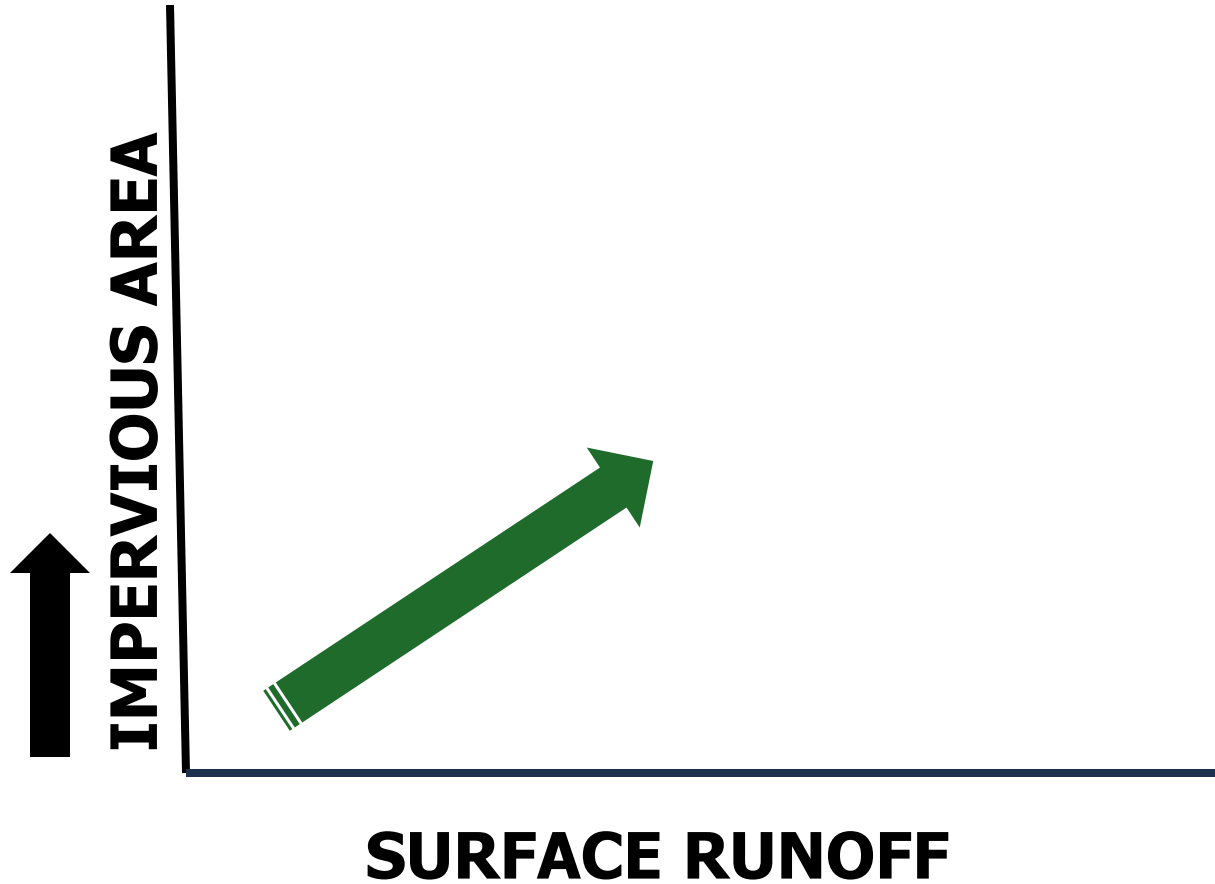
# FACTORS AFFECTING RUNOFF RATE



SOURCE: VDOF




# IMPACT FROM LOSS OF NATURAL AREAS



# UNCONTROLLED RUNOFF



# REQUIREMENTS FOR A RAIN GARDEN

- ▶ A rain garden requires:
    - Area where water can collect and infiltrate
    - Plants to maintain infiltration rates
    - Diverse microbe communities
    - Water holding capacity
  - ▶ Space should be sized for projected runoff
  - ▶ Length should be two times the width
  - ▶ Garden should drain completely in 24 - 48 hours to prevent mosquito breeding
  - ▶ A long term commitment to maintaining the garden is required for a successful outcome.
- 

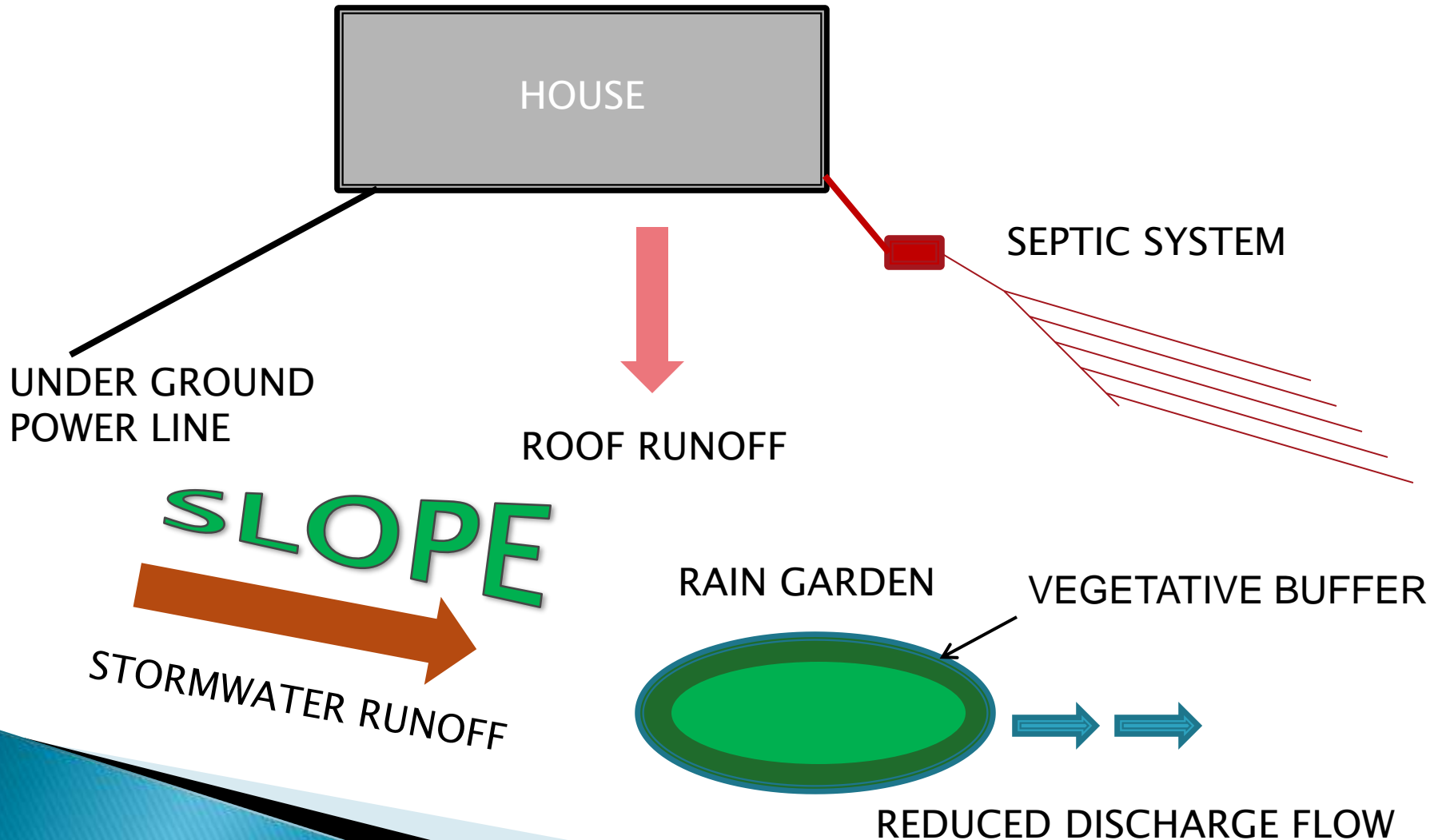
# ELEMENTS OF RAIN GARDEN

- ▶ A grass buffer strip around the garden that will slow the velocity of the runoff
- ▶ A mulch layer to provide a medium for the biological activities to occur and keep the soil moist
- ▶ Plants that use the runoff for moisture and source of nutrients
- ▶ A soil layer where the plant roots will collect moisture and nutrients for growth
- ▶ A ponding area or depression of the garden to provide storage needed for runoff
- ▶ A berm that is at least six inches of soil or rocks that works like a dam to pond the runoff.

# GARDEN LOCATION CONSIDERATIONS

- ▶ To select a location for the rain garden, begin by observing your yard during a rainfall event.
- ▶ Notice where water is flowing from, and where it is going.
- ▶ Rain gardens should ideally be located between the source of runoff (roofs and driveways) and the runoff destination (drains, streams, low spots, etc.).
- ▶ Be sure to consider the following:
  - The garden should not be within 10 feet of the house foundation
  - Gardens should be located at least 25 feet from a septic system drainfield
  - Gardens should not be placed within 25 feet of a well head
  - Make sure to avoid underground utility lines
  - The best location for the garden will be in partial to full sun
  - Rain gardens should be constructed where the water table is at least 2' below the surface of the soil.

# RAIN GARDEN SITE PLACEMENT




# SITE SELECTION



**SELECT SITE WITH NATURAL DRAINAGE**

# CHECK SOIL FOR INFILTRATION RATE


- Dig a 12-inch deep hole at the proposed site of your rain garden and fill it completely with water.
  - Allow the water to sit for at least an hour so that the soil can saturate.
  - Refill the hole so it is full.
  - From this point on, observe to see if the water drains into the soil.
  - If the water drains within 48 hours, the site is suitable for a rain garden, however it is highly recommended that the soil be amended with compost and sand.
  - If the water does not drain in 48 hours, select a different location or amend or replace the soil or install an under drain.
  - Run infiltration test more than once to confirm results.
- 



# SIZING THE GARDEN AREA

- ▶ **Step One: Calculate the square footage of the Impervious Surfaces.**
  - Roof - 50 ft. x 50 ft. = 2500 sq. ft.
  - Driveway - 12 ft. x 20 ft. = 240 sq. ft.
  - Concrete Patio - 15 ft. x 12 ft. = 180 sq. ft.
  - Total impervious surface = 2920 sq. ft. = runoff surface area
- ▶ **Step Two: Calculate the square footage of the Pervious Surfaces.**
  - Lawn Area 50 ft. x 30 ft. = 1500 sq. ft.

# RUNOFF COEFFICIENT

- ▶ Coefficient is a number representing the ability of a surface to absorb water
  - ▶ A high coefficient indicates an impervious surface such as a roof or concrete driveway
  - ▶ A low coefficient indicates a surface such as turf grass, which can absorb a significant amount of rain water
  - ▶ Coefficients must be established for each surface from which runoff will flow into the rain garden.
  - ▶ If only a portion of a roof will flow to rain garden only that percentage of roof area should be considered.
- 

# Simplified Table of Rational Method Runoff Coefficients

<b>Ground Cover</b>	<b>Runoff Coefficient, c</b>
<b>Lawns</b>	<b>0.05 - 0.35</b>
<b>Forest</b>	<b>0.05 - 0.25</b>
<b>Cultivated land</b>	<b>0.08 - 0.41</b>
<b>Meadow</b>	<b>0.1 - 0.5</b>
<b>Parks, cemeteries</b>	<b>0.1 - 0.25</b>
<b>Unimproved areas</b>	<b>0.1 - 0.3</b>
<b>Pasture</b>	<b>0.12 - 0.62</b>
<b>Residential areas</b>	<b>0.3 - 0.75</b>
<b>Business areas</b>	<b>0.5 - 0.95</b>
<b>Industrial areas</b>	<b>0.5 - 0.9</b>
<b>Asphalt streets</b>	<b>0.7 - 0.95</b>
<b>Brick streets</b>	<b>0.7 - 0.85</b>
<b>Roofs</b>	<b>0.75 - 0.95</b>
<b>Concrete streets</b>	<b>0.7 - 0.95</b>

**Step Three: Multiply the square footage obtained in Steps One and Two** by the appropriate runoff coefficient by 7% of runoff. 7 % = the percentage of the total runoff area

Impervious surfaces = 0.9

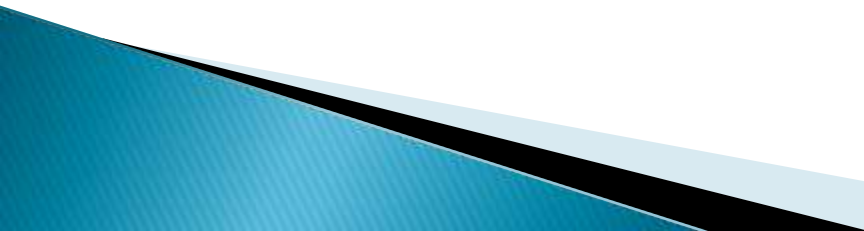
Pervious surfaces = .25

2920 sq. ft. (impervious surfaces) x 0.07 (percent of runoff) x 0.9 (runoff value) = 184 sq. ft.

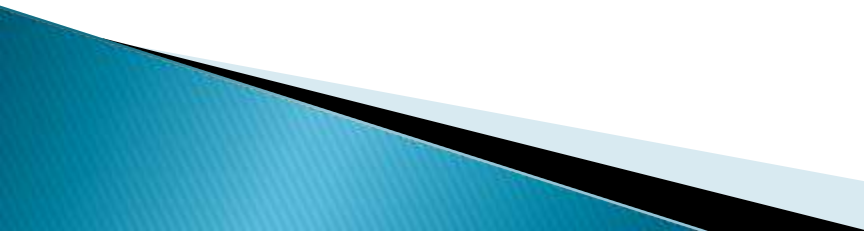
1500 sq. ft. (lawn area) x 0.07 (percent of drainage) x 0.25 (runoff value) = 26 sq. ft.

Add pervious & impervious surfaces = 210 SF

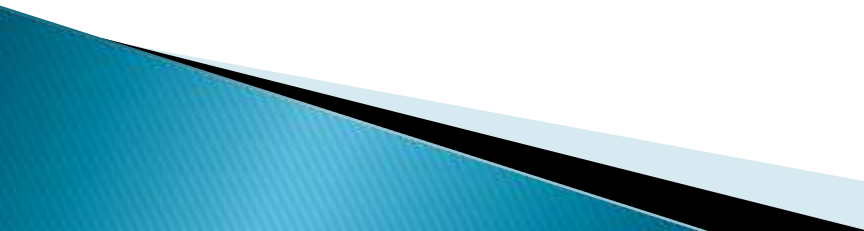
# CONSTRUCTION LAYOUT

- ▶ Determine area requirement based on runoff calculations
  - ▶ Stake out garden outline
  - ▶ Check elevations using grade rod and line level or construction level
  - ▶ Adjust proposed excavated area to fit topography
  - ▶ Make a sketch of proposed site and select plants to best suit the design, temperature zone, and degree of sunlight or shade
- 

# STEPS TO DESIGN AND CONSTRUCT A RAIN GARDEN

1. Inventory the site for existing plants, under ground utilities, septic system, well, structures
  2. Analyze the site (soil conditions, water flow, % of sun light)
  3. Determine type of rain garden (underdrain or no underdrain)
  4. Design a garden &/or choose a template
    - a. Ensure that design layout meshes with the site conditions and topography.
    - b. Create a map of what you will plant based on your site and design ideas
    - c. Create a list of plants to buy (Plant schedule) and plants to move/reinstall
    - d. Determine what soil amendments and/or pipe required
- 

# CONSTRUCTION STEPS (CONTINUED)

5. Prepare area (Site Preparation)
    - a. Layout the plan on the ground
    - b. Excavate and install underdrainage if you are providing underdrains
    - c. Add appropriate soil amendments
    - d. Edge bed as desired
  6. Purchase plants and mulch
  7. Layout plants according to the plan; adjust as necessary
  8. Install plants
  9. Apply mulch
  10. Water garden during establishment period and maintain as needed
- 

# EXCAVATING RAIN GARDEN AREA





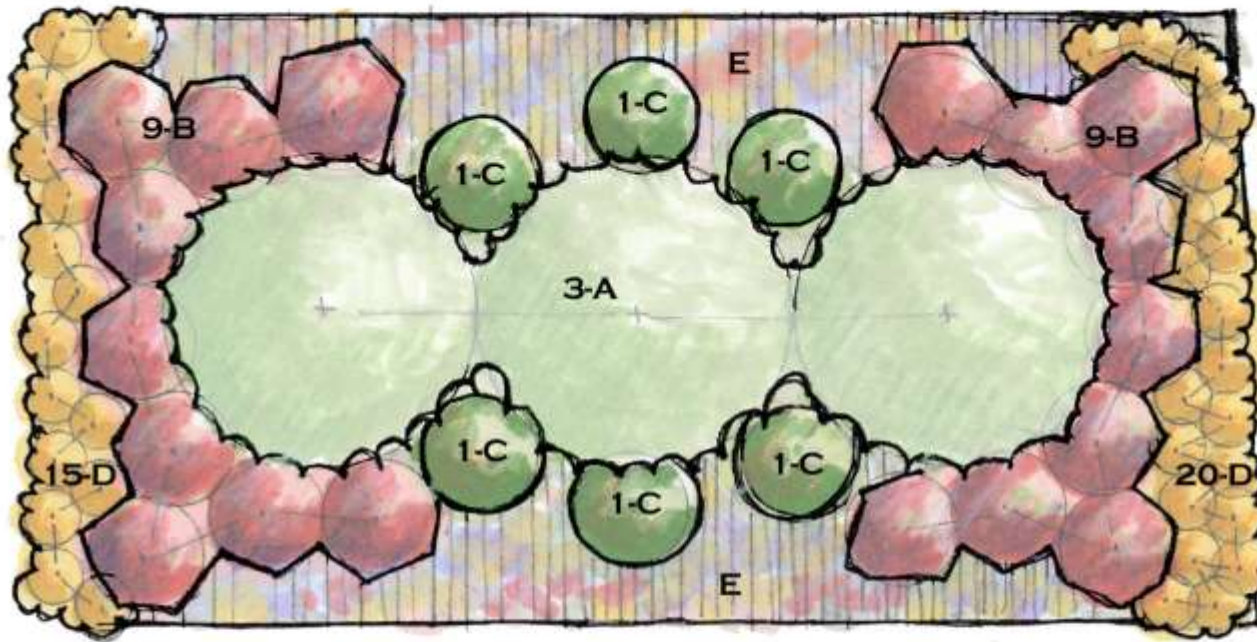
# PLANTING CONSIDERATIONS

- ▶ Remember, always use native plants
- ▶ Select plants from available lists that can tolerate fluctuating levels of soil wetness.
- ▶ Plants that can tolerate wet conditions should be planted in areas that retain water over the longest time period.
- ▶ Less water tolerant plants should be placed near the edge of the garden or on mounds within the rain garden to elevate the roots above the ponded water level.
- ▶ Mulch with 2-3 inches of hardwood mulch.
- ▶ Avoid lighter mulches that tend to float

# PLANT SELECTION

- ▶ **What kind of plants should I use?**
  - Always use native plants
  - Use container-grown plants with a well-established root system
- ▶ **What are the best plants for where I live?**
  - Plant species is determined by the type of rain garden and also the amount of available sunlight. Plants that are native to your area should need the least maintenance – they are adapted to the climate
- ▶ **Lay out the plants in the garden before planting**

# PLANTING LAYOUT AND PLANT TYPES



- A - *Ilex opaca* (American Holly), 8' o.c.
- B - *Vaccinium corymbosum* (Highbush Blueberry), 3' o.c.
- C - *Rhododendron viscosum* (Swamp Azalea), or *Cornus sericea* (Redosier Dogwood),  
or *Ilex glabra nana* (Dwarf Inkberry)
- D - *Hemerocallis hybrids* (Hybrid daylilies e.g. 'Happy Returns'), 12" o.c. or *Phlox subulata* (Thrift), 12" o.c.
- E - Wildflower Mix, 85 SF; sample mix:
  - 50% *Rudbeckia hirta* (Black-Eyed Susan)
  - 20% *Echinacea purpurea* (Purple Coneflower),
  - 20% *Liatrus spicata* (Blazing-Star),
  - 10% *Asclepias tuberosa* (Butterfly Weed)

If using plants (vs. seed) for wildflowers, space 18" o.c. (19 -*Rudbeckia*, 8 -*Echinacea*, 8- *Liatrus*, 4 - *Asclepias*) <seeding is lower cost but higher maintenance option due to need for nurturing seedlings>

note: o.c. = on center



The Low Impact  
Development Center, Inc.



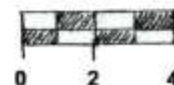
## FOR THE BIRDS RAINGARDEN

450 SF

Full Sun-Pt. Shade

All zones

Scale: 1/4"=1'



N

# PLANT SELECTION



**SELECT NATIVE PLANTS THAT FIT THE SPACE  
PLAN FOR MATURE GROWTH SIZE**

# TYPICAL PLANT LIST

## ▶ Perennials

- ▶ Blue Star (3) – *Amsonia tabernaemontana*
- ▶ Lady Fern (2) – *Athyrium felix-femina*
- ▶ Butterflyweed (1) – *Asclepias tuberosa*
- ▶ Swamp Milkweed (3) – *Asclepias incarnata*
- ▶ Climbing Aster (3) – *Aster carolinianus*
- ▶ False Indigo (1,2) – *Baptisia species*
- ▶ Boltonia (3) – *Boltonia asteriodes*
- ▶ Turtlehead (3) – *Chelone glabra*
- ▶ Green and Gold (2) – *Chrysogonum virginianum*
- ▶ Mouse Ear Coreopsis (2) – *Coreopsis auriculata*
- ▶ Tickseed (1,2) – *Coreopsis lanceolata*
- ▶ Swamp Coreopsis (2) – *Coreopsis rosea*
- ▶ Joe Pye Weed (3) – *Eupatorium dubium*
- ▶ Swamp Sunflower (3) – *Helianthus angustifolius*
- ▶ Swamp Mallow (3) – *Hibiscus moscheutos*
- ▶ Texas Star (3) – *Hibiscus coccineus*
- ▶ Blue Flag Iris (3) – *Iris virginica*
- ▶ Cardinal Flower (3) – *Lobelia cardinalis*
- ▶ Cinnamon Fern (3) – *Osmunda cinnamomea*
- ▶ Royal Fern (3) – *Osmunda regalis*
- ▶ Garden Phlox (2) – *Phlox paniculata*
- ▶ Moss Pinks (1,2) – *Phlox subulata*
- ▶ Rudbeckia (1,2) – *Rudbeckia fulgida*
- ▶ Green Headed Coneflower (3) – *Rudbeckia laciniata*
- ▶ Goldenrod (3) – *Solidago rugosa*
- ▶ Ironweed (3) – *Vernonia novaboracensis*

# TYPICAL PLANT LIST

## ▶ **Shrubs**

- ▶ Chokeberry – *Aronia arbutifolia*
- ▶ Beautyberry – *Callicarpa americana*
- ▶ Sweet Shrub – *Calycanthus floridus*
- ▶ Buttonbush – *Cephalanthus occidentalis*
- ▶ Pepperbush – *Clethra alnifolia*
- ▶ Strawberry Bush – *Euonymous americanus*
- ▶ Winterberry – *Ilex verticillata*
- ▶ Virginia Willow – *Itea virginica*
- ▶ Spicebush – *Lindera benzion*
- ▶ Possumhaw – *Viburnum nudum*

# HOW TO PLANT

- ▶ Select a variety of plants suited for the hardiness zone of the garden.
- ▶ Dig the hole for each plant twice as wide as the plant container and deep enough to keep the crown of the young plant right at the soil line
- ▶ Firmly tamp the soil around plant roots to eliminate air pockets.
- ▶ Lightly tamp down the soil around the plant to eliminate air pockets.
- ▶ Plant water tolerant plants in the deepest area of the garden.
- ▶ Place more typical plants around the drier edge areas.
- ▶ Water immediately after planting, and then water twice weekly until the plants are well established.
- ▶ After the first growing season watering will not be necessary unless there is a lengthy drought.
- ▶ Add mulch two inches thick, but avoid burying new plants.
- ▶ Remove weeds as required

# DIRECTING FLOW TO THE SITE

- ▶ Following garden location selection additional water may be diverted to site.
- ▶ Flexible plastic pipe can be used to direct water from downspouts and collecting areas to the rain garden.
- ▶ Be sure to factor this additional water flow into your garden sizing calculations.







**TOO MUCH RAIN  
CAN RESULT IN  
LOSS OF  
GARDEN SOIL**

**WASH OUT MAY  
REQUIRE GARDEN  
REDESIGN OR  
EXPANSION**



# ENHANCING GARDEN PERFORMANCE

- ▶ For very well drained soils, adding compost to the top layer of the garden will allow plants to establish themselves better and also allow the garden to retain more water. If you have compacted soils, you may add gravel or mulch to improve infiltration, or preferably a backyard wetland may be installed.

# GARDEN MAINTENANCE

- ▶ On going maintenance is necessary to keep the garden healthy and functioning
- ▶ Remove dead vegetation
- ▶ Mulch annually
  - Mulching is an important part of rain garden maintenance. Mulch keeps the soil moist, allowing for easy infiltration of rain water. Un-mulched surfaces may develop into a hard, impervious layer.
  - Mulching also protects plants and reduces weed growth. Each spring, rain gardens should be re-mulched with 2-3 inches of hardwood mulch.

# TYPICAL MAINTENANCE ACTIVITIES

Activity	Schedule
<ul style="list-style-type: none"><li>•Remulch void areas</li><li>•Treat diseased trees and shrubs</li><li>•Mow turf areas</li></ul>	As needed
<ul style="list-style-type: none"><li>•Water plants daily for 2 weeks</li></ul>	At project completion
<ul style="list-style-type: none"><li>•Inspect soil and repair eroded areas</li><li>•Remove litter and debris</li></ul>	Monthly
<ul style="list-style-type: none"><li>•Remove and replace dead and diseased vegetation</li></ul>	Twice per year
<ul style="list-style-type: none"><li>•Add mulch</li><li>•Replace tree stakes and wires</li></ul>	Once per year

# SOURCE MATERIALS CREDIT

- ▶ Virginia Department of Forestry
  - ▶ EPA - Native Landscaping
  - ▶ Rutgers Cooperative Research & Extension,  
(NJAES)
  - ▶ Rain Garden Network
  - ▶ Chesapeake Bay Foundation
- 

## ADDITIONAL RESOURCES

### **Potomac Watershed Partnership**

<http://www.potomacwatershed.net/>

### **Virginia Department of Forestry**

<http://www.dof.virginia.gov/>

### **Chesapeake Bay Foundation**

<http://www.cbf.org/>

### **Virginia Native Plant Society**

Has a list of nurseries that carry native plants.

<http://www.vnps.org/>

### **Department of Conservation and Recreation**

“Native Plants for Conservation, Restoration and Landscaping”

[http://www.dcr.virginia.gov/natural\\_heritage/nativeplants.shtml](http://www.dcr.virginia.gov/natural_heritage/nativeplants.shtml)

### **Blue Ridge Community College**

[http://www1.brcc.edu/murray/research/Rain\\_Garden/default.htm](http://www1.brcc.edu/murray/research/Rain_Garden/default.htm)

### **Virginia Tech Soil Sampling Laboratory**

<http://www.ext.vt.edu/pubs/compost/452-129/452-129.html#toc>

<http://www.ext.vt.edu/pubs/waterquality/426-043/426-043.html>

### **Virginia Cooperative Extension**

<http://www.ext.vt.edu/resources/>

### **EPA Native Landscaping**

<http://www.epa.gov/greenacres/>

### **Additional Rain Garden Web sites**

<http://www.urbanwaterquality.org/RainGardens/rgindex1.htm>

## **FINAL THOUGHT**

**“Restoring a national treasure like the Chesapeake Bay and its thousands of miles of rivers and streams is a large and important effort. It requires governments, businesses, and individuals—each of us—to do our part. We need to cooperate and reduce pollution from all sectors—agriculture, wastewater treatment plants, and air. Certainly, controlling urban and suburban polluted runoff should be a top priority”.**

*Chesapeake Bay Foundation – Polluted Runoff 2014*

**Questions?**



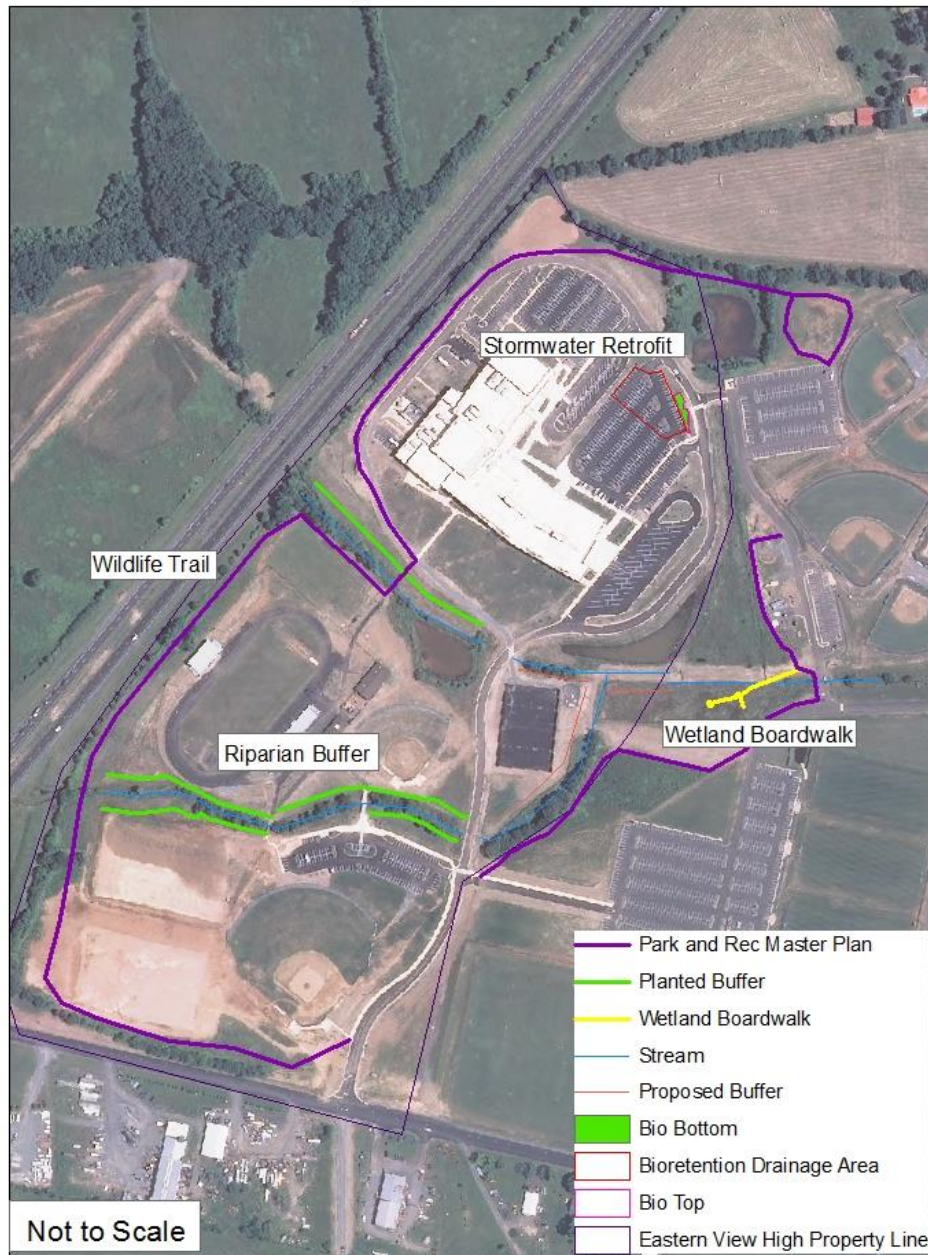
# Community Connections

Making Wetlands  
Accessible to All

# Main Partners



# Eastern View High School Outdoor Classroom



# Funding

- Virginia Dept. of Forestry
- National Fish & Wildlife Foundation
- Dept. of Environmental Quality
- Vaughn Bassett

# Bioretention



# Raingarden during construction



# Outdoor Classroom at EVHS













# Courtesy of the Star Exponent



# Additional Partners



Virginia  
Cooperative Extension

A partnership of Virginia Tech and Virginia State University [www.ext.vt.edu](http://www.ext.vt.edu)



# Wetsel Middle School

- Madison, VA
- Had a flooding and sediment issue
- Converted part of the parking lot into a raingarden











# Virginia Conservation Assistance Program (VCAP)

Financial Incentive Program for  
Residential and Commercial  
Properties



# Pet Waste Station

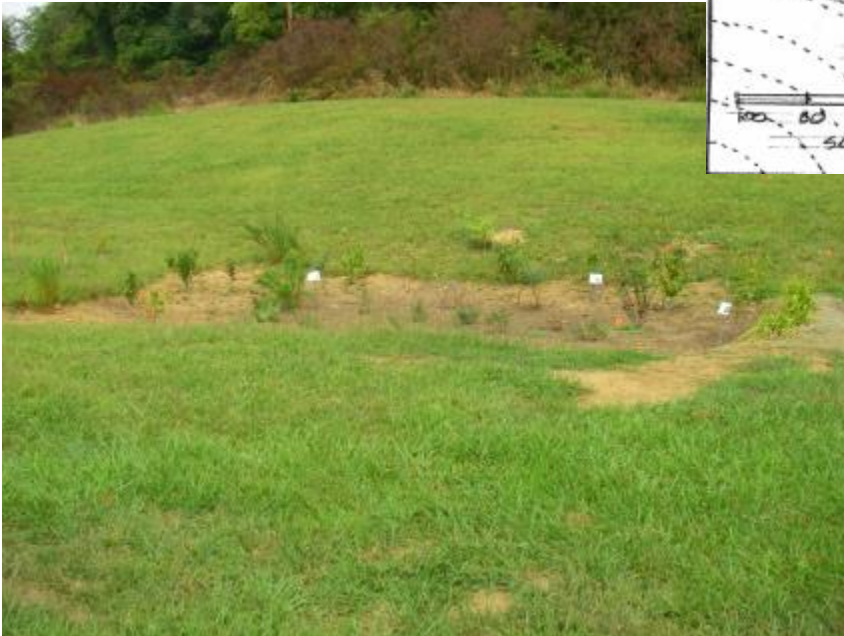
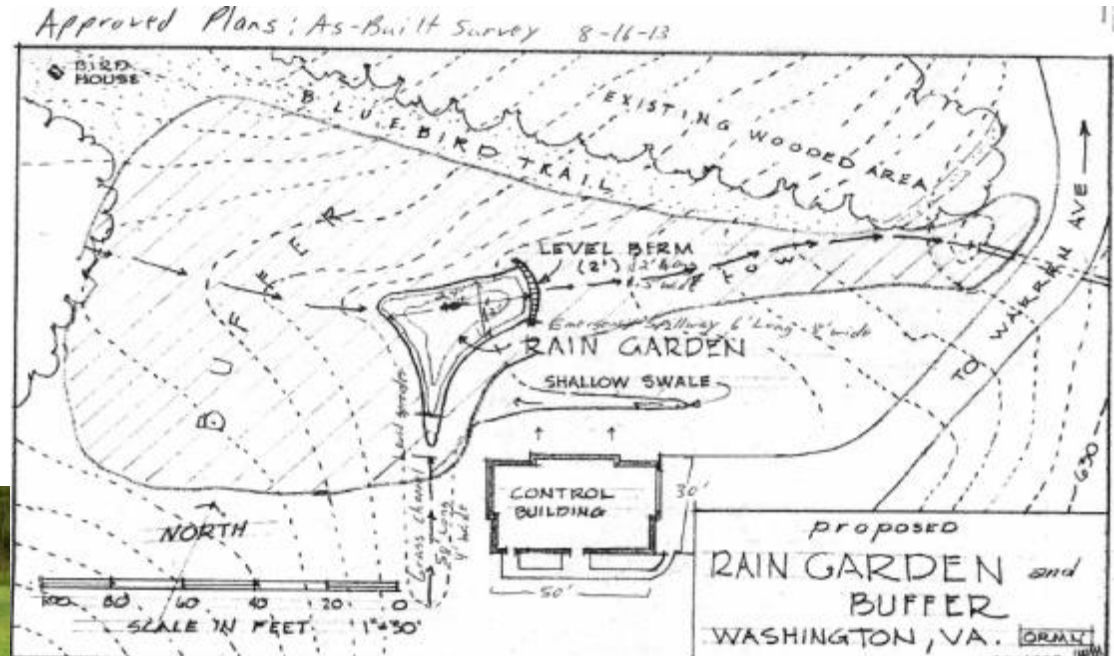


Culpeper Sports Complex 2013



Lake of the Woods  
Keaton Lake Beach 2013

# Town Washington WWTP



September 2013

# Avon Hall

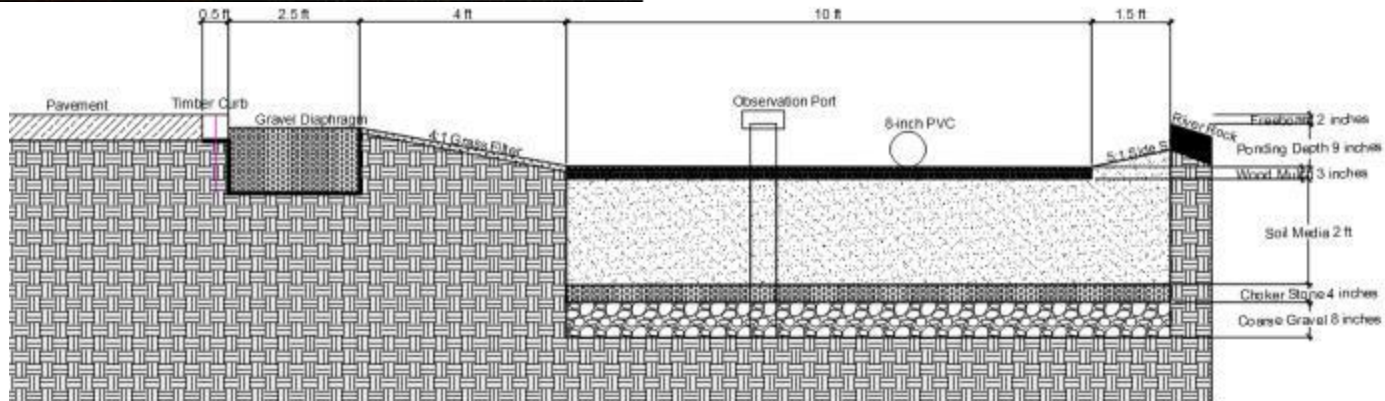
September  
2013



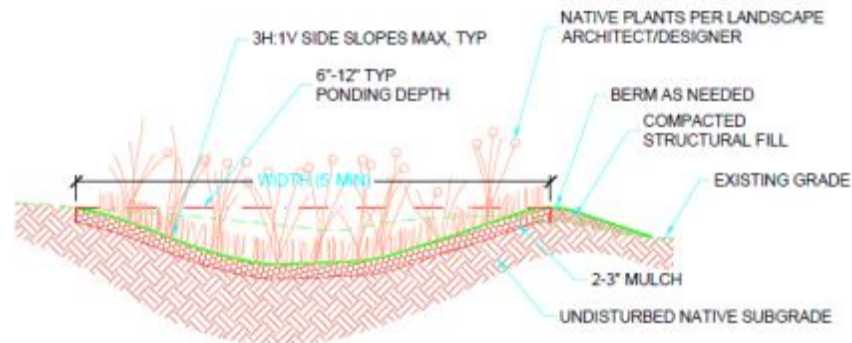
October  
2014



# Wetsel Middle School



# Pearl Sample Elementary





# Lake of the Woods Association



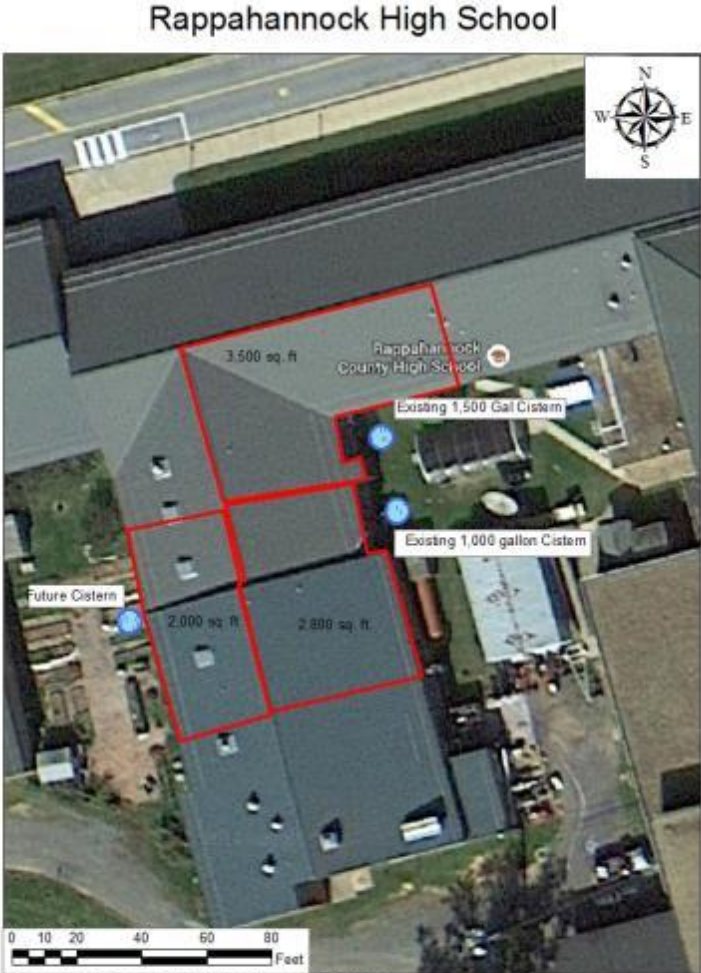
Virginia  
Environmental  
Endowment



# Gordon-Barbour Elementary



# Rappahannock High School



Prepared by Culpeper Soil and Water Conservation District

July 31, 2014

# Prospect Heights Middle School



### Prospects Middle School Outdoor Classroom Concept





# Questions?

Stephanie DeNicola

351 Lakeside Drive, Culpeper, VA 22701

540-825-8591

[stephanied@culpeperswcd.org](mailto:stephanied@culpeperswcd.org)